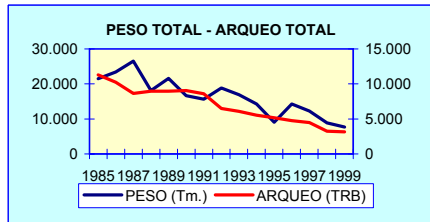
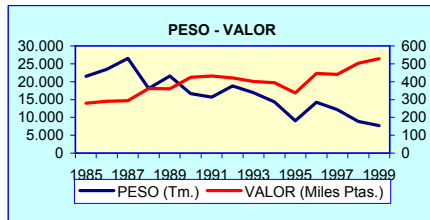


**TABLA 1.1. RESUMEN TOTAL ANUAL**

AÑO	PESO (Tm.)	VALOR (Miles Ptas.)	PRECIO MEDIO (Ptas.)
1985	21.528,88	6.000.354	279
1986	23.424,20	6.783.400	290
1987	26.481,08	7.771.652	293
1988	18.133,56	6.569.877	362
1989	21.578,60	7.778.434	360
1990	16.677,58	7.065.491	424
1991	15.658,70	6.768.553	432
1992	18.801,53	7.912.466	421
1993	16.919,70	6.792.399	401
1994	14.306,70	5.648.201	395
1995	9.055,16	3.044.035	336
1996	14.222,88	6.343.482	446
1997	12.213,35	5.383.675	441
1998	8.846,81	4.454.180	503
1999	7.678,27	4.050.331	528



**TABLA 1.2. RESUMEN POR CATEGORÍAS (PECES, MOLUSCOS, CRUSTACEOS)**

AÑO	PECES			MOLUSCOS			CRUSTACEOS		
	PESO (Tm.)	VALOR (Miles Ptas.)	PRECIO (Ptas./ Kg.)	PESO (Tm.)	VALOR (Miles Ptas.)	PRECIO (Ptas./ Kg.)	PESO (Tm.)	VALOR (Miles Ptas.)	PRECIO (Ptas./ Kg.)
1985	18.576,24	4.629.681	249	402,38	70.215	174	2.550,26	1.300.458	510
1986	21.635,40	5.766.300	267	546,20	128.100	235	1.242,60	889.000	715
1987	24.669,00	6.300.545	255	783,90	209.115	267	1.028,17	1.261.050	1.226
1988	16.780,26	5.344.045	318	422,34	115.770	274	930,96	1.110.062	1.192
1989	20.025,55	6.289.094	314	293,42	84.256	287	1.259,63	1.405.084	1.115
1990	15.838,91	6.111.585	386	165,70	50.851	307	672,97	903.054	1.342
1991	14.580,78	5.429.500	372	216,58	82.669	382	861,34	1.256.384	1.459
1992	17.763,28	6.448.179	363	191,36	56.644	296	846,89	1.407.643	1.662
1993	15.864,21	5.716.923	360	115,04	44.334	385	940,45	1.031.142	1.096
1994	12.542,46	4.257.535	339	128,00	54.673	427	1.636,25	1.335.993	816
1995	8.131,32	2.309.240	284	59,93	26.974	450	863,92	707.822	819
1996	13.031,91	5.191.840	398	97,82	12.693	130	1.093,15	1.138.950	1.042
1997	10.863,27	4.458.535	410	234,42	36.953	158	1.115,66	888.188	796
1998	8.336,68	3.737.043	448	88,51	24.788	280	421,62	692.350	1.642
1999	7.142,01	3.463.576	485	145,15	34.618	238	391,11	552.137	1.412

**TABLA 1.3. EVOLUCIÓN DE LA FLOTA OPERATIVA**

AÑO	DOTADAS CON MOTOR				NO DOTADAS CON MOTOR				TOTAL			
	BARCOS (Nº)	ARQUEO TRB	POTENCIA CV	TRIP	BARCOS (Nº)	ARQUEO TRB	POTENCIA CV	TRIP	BARCOS (Nº)	ARQUEO TRB	POTENCIA CV	TRIP
1985	206	11.293	44.953	2.339	12	12	0	19	218	11.305	44.953	2.358
1986	164	10.217	39.842	1.786	12	12	0	19	176	10.229	39.842	1.805
1987	163	8.620	38.086	1.544	13	12	0	20	176	8.632	38.086	1.564
1988	170	8.936	39.910	1.603	13	12	0	20	183	8.949	39.910	1.623
1989	172	8.963	40.170	1.617	12	11	0	19	184	8.974	40.170	1.636
1990	171	9.029	40.408	1.590	12	11	0	19	183	9.040	40.408	1.609
1991	167	8.607	39.118	1.527	12	11	0	19	179	8.618	39.118	1.546
1992	157	6.475	32.051	1.393	12	11	0	19	169	6.486	32.051	1.412
1993	153	6.050	30.307	1.330	12	11	0	19	165	6.061	30.307	1.349
1994	147	5.532	28.351	1.225	12	11	0	19	159	5.543	28.351	1.244
1995	143	5.159	27.207	1.151	12	11	0	19	155	5.171	27.207	1.170
1996	136	4.726	24.833	1.076	11	11	0	18	147	4.737	24.833	1.094
1997	139	4.491	24.157	1.051	10	9	0	16	149	4.500	24.157	1.067
1998	126	3.236	18.332	878	10	9	0	16	136	3.245	18.332	894
1999	124	3.164	17.915	858	10	9	0	16	134	3.173	17.915	874

**PUERTO: ALGECIRAS**

**TABLA 1.4. DATOS POR ESPECIES. AÑOS 1985-1989**

ESPECIE	FAO	1985		1986		1987		1988		1989	
		PESO (Kg.)	VALOR (Miles Ptas.)	PESO (Kg.)	VALOR (Miles Ptas.)	PESO (Kg.)	VALOR (Miles Ptas.)	PESO (Kg.)	VALOR (Miles Ptas.)	PESO (Kg.)	VALOR (Miles Ptas.)
ACEDIA	CET	68.660	12.780	49.100	7.800	26.600	9.379	17.720	2.668	18.240	2.504
AGUJA	BEN	184.570	8.278	201.400	14.500	64.760	9.096	185.537	18.814	56.110	6.926
VORAZ-BESUGO	SBR	220.780	23.248	274.500	27.300	264.661	55.135	158.240	35.304	218.670	62.741
ANCHOVA	BLU										
ARAÑAS	WEX										
ATUN	BFT	548.592	111.173	820.700	190.800	1.766.284	361.168	1.361.393	514.621	3.261.019	804.869
BACALADILLA	WHB	2.485.157	206.404	3.023.100	402.500	3.602.596	325.091	977.584	95.179	1.179.180	148.287
BOGA	BOG	224.318	4.692	266.200	16.400	204.410	6.097	193.078	7.226	279.230	14.202
BONITO	BON	76.025	11.491	50.700	10.000	124.735	31.898	79.043	18.772	26.820	6.850
BOQUERON	ANE	191.560	49.469	248.600	70.300	249.690	88.800	195.400	94.850	269.660	153.356
BRECA	PAC									2.200	550
BROTOLAS	FOX	69.000	14.804	93.600	24.600	80.615	15.543	57.130	14.592	39.100	9.094
BURRO	GBR										
CABALLAS	MAZ	920.440	51.329	1.038.100	78.600	1.314.640	72.438	444.645	39.233	913.596	90.747
CACHUCHO	DEL	49.730	5.105	100.100	10.500	107.470	31.311	41.950	5.327	47.060	8.699
CARAMEL-CHUCLAS	PIC									6.580	3.290
CHERNA	WRF	20.475	7.508	75.200	27.300	48.459	38.462	36.960	39.315	33.221	28.657
CHUCHOS	SRX	2.000	200			2.838	2.554				
CONGRIO	COE	187.020	21.963	260.500	31.300	185.922	20.757	97.380	10.726	85.630	10.153
CORVINA	MGR	21.668	3.961	20.000	3.000	11.622	4.774	7.739	3.307	12.805	7.848
DENTONES-HURTA	DEX,REA	41.530	9.159	59.000	12.400	53.740	13.171	16.360	5.945	23.050	9.420
DENTONES-PARGO	DEX, RPG	361.788	202.274	305.000	152.800	373.030	255.316	225.335	156.101	241.554	164.355
DORADA	SBG	3.680	646	12.600	2.700	8.115	4.948	16.700	10.431	6.720	3.247
ESCUALOS DIVERSOS	SKH	1.432.407	590.316	1.312.400	538.100	1.714.007	545.176	1.601.382	580.482	1.071.315	448.895
FANECA	BIB	113.590	8.255	110.400	17.500	127.511	15.048	45.570	9.575	65.170	12.848
GALLINETA	BRF									5.840	2.336
HERRERA	SSB										
JAPUTA	POA	1.930.733	346.192	2.730.400	371.600	3.294.632	523.827	2.140.144	548.432	2.210.451	401.225
JURELES	JAX	1.348.585	91.571	1.172.200	140.400	1.304.434	126.802	907.110	77.960	976.963	120.061
LENGUADOS	SOX	75.940	33.779	127.400	62.600	99.060	75.299	27.445	27.964	32.765	34.609
LISTADO	SKJ	163.750	18.506	54.000	7.000	11.160	1.412	22.070	3.993	122.936	23.128
LUBINA	BSS										
MARRAJO-TINTORERA	SMA,BSH							258.784	14.939	22.500	19.125
MELVA	BLT	204.860	16.697	112.100	12.300	288.915	26.913	353.130	24.764	642.600	55.112
MERLUZA	HKE	3.592.048	1.607.660	4.765.900	2.255.200	5.189.800	2.069.593	4.068.598	1.668.821	3.501.032	1.544.583
MERO	GPD	44.628	29.064	46.700	27.700	16.444	15.645	17.101	6.266	22.312	11.775
LISAS	MUL										
PALOMETA	POP										
PECES MARINOS	MZZ	677.560	78.653	588.300	76.500	667.379	193.579	520.725	112.833	1.487.510	290.163
PEZ SABLE	SFS										
PEZ DE SAN PEDRO-GALLOS	JOD,LEZ	85.250	28.067	106.000	34.600	73.520	37.893	58.910	21.934	80.720	31.893
PEZ ESPADA	SWO	1.593.134	762.697	1.548.600	823.500	2.025.893	967.395	1.820.460	882.373	2.219.913	1.422.642
RABIL	YFT										
RAPESES	MNZ	431.810	132.870	436.900	115.300	306.298	158.896	252.450	150.757	310.358	178.086
RASCACIOS	SCS	211.120	35.869	223.100	48.700	172.855	62.639	127.140	50.537	127.440	54.947
RAYAS	RAJ									1.400	1.263
RAYAS-MANTAS	BAI	182.574	18.042	162.800	16.700	131.670	16.185	81.440	10.194	66.420	10.588
RODABALLOS	LEF	6.740	3.175	7.700	3.400	6.467	9.467	8.319	5.540	1.708	1.417
RUBIOS	GUX	68.500	18.955	156.200	30.500	9.503	2.751				
SALEMA	SLM										
SALMONETES	MUX	51.219	23.564	66.000	32.900	94.030	55.601	54.560	35.734	47.956	46.034
SARDINA	PIL	684.795	41.265	1.009.900	69.000	645.239	50.485	302.730	38.537	287.800	42.569
SARGOS	SWA										
<b>TOTAL PECES</b>		<b>18.576.236</b>	<b>4.629.681</b>	<b>21.635.400</b>	<b>5.766.300</b>	<b>24.669.004</b>	<b>6.300.545</b>	<b>16.780.262</b>	<b>5.344.045</b>	<b>20.025.554</b>	<b>6.289.094</b>
BIGARO	PEE										
CALAMARES	SQC	61.470	22.321	142.700	67.000	234.650	100.644	74.740	55.620	79.420	40.550
CHOCO	CTC	130.050	27.254	124.800	34.500	80.720	27.480	52.460	16.357	33.200	10.394
CHOPOS -CHOPITOS	CTL					14.150	4.460			14.130	4.865
MOLUSCOS MARINOS	MOL			64.600	6.000						
POTAS	OMZ	35.580	2.971			57.060	7.321	109.365	10.373	56.920	6.149
PULPO	OCC	175.284	17.669	214.100	20.600	389.560	69.211	185.770	33.421	88.890	20.135
VOLADORES	SQM					7.760	943			20.860	2.164
<b>TOTAL MOLUSCOS</b>		<b>402.384</b>	<b>70.215</b>	<b>546.200</b>	<b>128.100</b>	<b>783.900</b>	<b>209.115</b>	<b>422.335</b>	<b>115.770</b>	<b>293.420</b>	<b>84.256</b>
BOGAVANTE	LBE	3.395	7.421	10.000	16.800	1.358	3.020	3.692	9.870	456	1.171
CAMARONES	PAL	50.020	17.826	42.300	17.500	82.920	44.379	50.200	15.668	25.993	7.921
CANGREJOS DE MAR	CRA										
CARABINERO	SSH	155.330	78.263	65.100	37.600	83.310	115.980	53.675	81.809	58.658	73.885
CENTOLLA	SCR	7.775	1.799			5.273	1.253	4.802	1.330	1.599	480
CIGALA	NEP	72.705	63.424	71.900	58.400	66.410	105.232	49.465	90.822	39.840	62.164
CRUSTACEOS MARINOS	CRU			17.800	20.200						
GALERA	MTS										
GAMBA	DPS	2.247.373	1.090.677	1.010.700	679.400	780.549	963.857	762.605	890.469	1.127.830	1.243.700
LANGOSTAS	CRW	13.665	41.048	24.800	59.100	8.352	27.329	6.519	20.094	5.250	15.763
LANGOSTINO	TGS										
<b>TOTAL CRUSTACEOS</b>		<b>2.550.263</b>	<b>1.300.458</b>	<b>1.242.600</b>	<b>889.000</b>	<b>1.028.172</b>	<b>1.261.050</b>	<b>930.958</b>	<b>1.110.062</b>	<b>1.259.626</b>	<b>1.405.084</b>
<b>TOTAL ALGECIRAS</b>		<b>21.528.883</b>	<b>6.000.354</b>	<b>23.424.200</b>	<b>6.783.400</b>	<b>26.481.076</b>	<b>7.771.652</b>	<b>18.133.555</b>	<b>6.569.877</b>	<b>21.578.600</b>	<b>7.778.434</b>

TABLA 1.4. DATOS POR ESPECIES. AÑOS 1990-1994

ESPECIE	FAO	1990		1991		1992		1993		1994	
		PESO (Kg.)	VALOR (Miles Ptas.)	PESO (Kg.)	VALOR (Miles Ptas.)	PESO (Kg.)	VALOR (Miles Ptas.)	PESO (Kg.)	VALOR (Miles Ptas.)	PESO (Kg.)	VALOR (Miles Ptas.)
ACEDIA	CET	3.670	587	4.880	960	800	358	980	392	1.810	1.351
AGUJA	BEN	6.380	1.804			136.371	243.908	65.765	73.358		
VORAZ-BESUGO	SBR	54.980	12.589	119.940	25.290	139.283	37.166	247.550	79.495	230.974	176.589
ANCHOVA	BLU	12.760	6.380								
ARAÑAS	WEX										
ATUN	BFT	2.660.217	1.152.353	2.510.093	1.031.254	2.956.033	1.098.633	1.348.361	407.352	328.680	82.901
BACALADILLA	WHB	854.583	137.292	1.673.153	247.368	1.732.737	319.148	1.092.930	273.765	380.126	75.020
BOGA	BOG	151.089	7.690	104.322	5.611	38.293	3.978	26.109	4.324	47.903	2.419
BONITO	BON	680	204	7.440	911	18.810	3.757	127.060	84.635	102.220	21.574
BOQUERON	ANE	160.650	78.964	263.477	153.099	233.634	83.062	480	312	12.875	7.078
BRECA	PAC										
BROTOLAS	FOX	26.546	7.421	30.760	14.842	7.940	3.573	26.649	14.486	32.110	11.281
BURRO	GBR										
CABALLAS	MAZ	587.920	102.031	362.629	68.786	263.447	37.120	178.455	24.166	342.350	22.332
CACHUCHO	DEL	11.870	2.136	17.680	2.643	26.980	6.377	267.161	71.513	95.940	25.811
CARAMEL-CHUCLAS	PIC										
CHERNA	WRF	11.056	12.973	25.276	30.331	35.597	35.691	5.135	4.151	9.140	4.143
CHUCHOS	SRX										
CONGRIO	COE	31.930	3.727	31.860	4.035	46.170	6.046	15.975	5.338	25.400	9.978
CORVINA	MGR	16.178	10.439	2.400	1.620			2.720	7.037	5.645	1.552
DENTONES-HURTA	DEX,REA	8.670	3.975	19.570	8.503	560	240	280	140	9.620	2.594
DENTONES-PARGO	DEX, RPG	301.387	199.668	193.927	164.171	44.285	37.055	6.050	3.834	26.483	22.542
DORADA	SBG	5.176	2.646	2.280	1.114	2.718	1.320	4.700	2.350		
ESCUALOS DIVERSOS	SKH	1.680.382	824.574	767.827	338.645	910.293	434.744	1.328.880	504.638	1.210.150	454.868
FANECA	BIB	26.160	5.463	59.224	23.064	29.480	10.942	45.920	23.730	59.440	14.387
GALLINETA	BRF										
HERRERA	SSB										
JAPUTA	POA	1.885.851	392.216	918.650	208.473	1.221.660	331.110	1.514.080	423.633	2.243.520	543.184
JURELES	JAX	940.190	136.758	636.805	114.490	691.828	127.538	914.220	191.585	1.211.150	247.009
LENGUADOS	SOX	35.910	39.934	25.133	23.939	21.670	17.624	7.675	4.858	25.930	20.492
LISTADO	SKJ	64.617	11.313	3.960	977	5.600	560			5.860	1.509
LUBINA	BSS									399	627
MARRAJO-TINTORERA	SMA,BSH										
MELVA	BLT	108.979	14.861	270.120	55.024	454.127	90.908	139.990	26.867	59.885	8.075
MERLUZA	HKE	2.630.531	1.323.092	4.005.929	1.813.256	6.406.861	2.229.349	6.776.483	2.574.232	3.922.657	1.575.936
MERO	GPD	28.368	11.847	19.560	9.032	11.111	9.282	34.240	29.306	39.527	33.167
LISAS	MUL									1.160	1.856
PALOMETA	POP										
PECES MARINOS	MZZ	645.114	153.043	661.334	287.057	724.866	265.155	642.652	214.221	918.505	226.213
PEZ SABLE	SFS										
PEZ DE SAN PEDRO-GALLOS	JOD,LEZ	38.840	19.936	40.760	23.346	26.010	12.454	56.725	34.150	54.760	27.481
PEZ ESPADA	SWO	1.804.280	1.118.222	669.622	391.201	647.814	579.497	680.539	480.968	540.465	417.360
RABIL	YFT					4.047	1.260				
RAPESES	MNZ	256.850	160.436	268.064	162.210	179.730	114.996	158.930	98.808	271.403	151.677
RASCACIOS	SCS	93.400	39.765	100.410	44.995	22.040	9.802	2.280	842	34.010	13.110
RAYAS	RAJ										
RAYAS-MANTAS	BAI	75.418	9.580	74.300	10.411	187.870	65.375	4.080	336		
RODABALLOS	LEF	2.903	1.365	5.793	2.389	6.603	14.595			8.805	4.860
RUBIOS	GUX										
SALEMA	SLM										
SALMONETES	MUX	30.454	30.644	39.480	35.045	87.260	129.952	42.809	27.372	37.075	23.026
SARDINA	PIL	584.920	75.655	644.126	125.410	440.754	85.605	98.345	24.729	246.480	25.537
SARGOS	SWA										
<b>TOTAL PECES</b>		<b>15.838.909</b>	<b>6.111.585</b>	<b>14.580.784</b>	<b>5.429.500</b>	<b>17.763.282</b>	<b>6.448.179</b>	<b>15.864.208</b>	<b>5.716.923</b>	<b>12.542.457</b>	<b>4.257.535</b>
BIGARO	PEE										
CALAMARES	SQC	31.647	22.537	36.570	36.648	2.364	8.502	4.410	1.962	38.120	24.877
CHOCO	CTC	18.680	5.604								
CHOPOS -CHOPITOS	CTL	19.963	5.897	71.869	23.357	18.839	6.123	17.279	9.083	21.060	9.794
MOLUSCOS MARINOS	MOL							8.910	2.519		
POTAS	OMZ	14.200	3.047								
PULPO	OCC	61.312	11.462	79.380	17.124	168.195	41.598	84.440	30.770	31.705	10.686
VOLADORES	SQM	19.900	2.304	28.760	5.540	1.960	422			37.110	9.317
<b>TOTAL MOLUSCOS</b>		<b>165.702</b>	<b>50.851</b>	<b>216.579</b>	<b>82.669</b>	<b>191.358</b>	<b>56.644</b>	<b>115.039</b>	<b>44.334</b>	<b>127.995</b>	<b>54.673</b>
BOGAVANTE	LBE	459	1.132	1.721	5.303			15.100	10.948		
CAMARONES	PAL	9.640	2.063	3.900	1.755	6.660	10.574	12.190	6.794	6.285	4.144
CANGREJOS DE MAR	CRA										
CARABINERO	SSH	53.775	67.083	33.104	36.901	59.790	105.333	150.480	151.039	198.305	210.374
CENTOLLA	SCR	7.285	2.215	5.985	1.796	6.360	3.551	320	277		
CIGALA	NEP	44.376	90.396	44.638	97.299	30.860	65.682	145.970	133.380	55.020	71.373
CRUSTACEOS MARINOS	CRU							580	348		
GALERA	MTS										
GAMBA	DPS	550.318	718.751	768.893	1.104.035	735.825	1.215.931	615.530	728.125	1.376.640	1.050.102
LANGOSTAS	CRW	7.117	21.414	3.096	9.296	7.396	6.572	280	232		
LANGOSTINO	TGS										
<b>TOTAL CRUSTACEOS</b>		<b>672.970</b>	<b>903.054</b>	<b>861.337</b>	<b>1.256.384</b>	<b>846.891</b>	<b>1.407.643</b>	<b>940.450</b>	<b>1.031.142</b>	<b>1.636.250</b>	<b>1.335.993</b>
<b>TOTAL ALGECIRAS</b>		<b>16.677.581</b>	<b>7.065.491</b>	<b>15.658.700</b>	<b>6.768.553</b>	<b>18.801.531</b>	<b>7.912.466</b>	<b>16.919.697</b>	<b>6.792.399</b>	<b>14.306.702</b>	<b>5.648.201</b>

**PUERTO: ALGECIRAS**

**TABLA 1.4. DATOS POR ESPECIES. AÑOS 1995-1999**

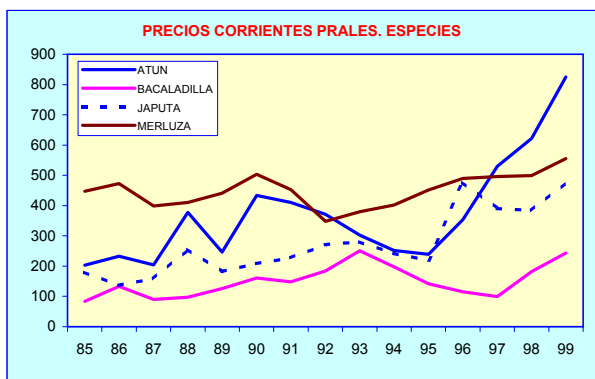
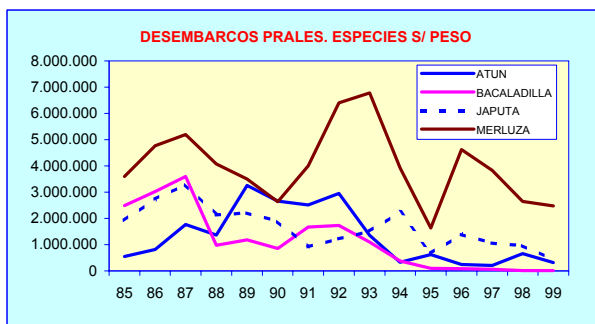
ESPECIE	FAO	1995		1996		1997		1998		1999	
		PESO (Kg.)	VALOR (Miles Ptas.)	PESO (Kg.)	VALOR (Miles Ptas.)	PESO (Kg.)	VALOR (Miles Ptas.)	PESO (Kg.)	VALOR (Miles Ptas.)	PESO (Kg.)	VALOR (Miles Ptas.)
ACEDIA	CET	1.990	899	4.500	2.646	600	213	705	183		
AGUJA	BEN			547	295	9.644	8.036	256.611	218.206		
VORAZ-BESUGO	SBR	231.749	229.731	453.368	302.533	407.778	336.704	289.341	341.629	208.327	298.394
ANCHOVA	BLU					80	25				
ARAÑAS	WEX					520	35	180	99		
ATUN	BFT	624.020	149.105	239.081	84.561	211.838	112.144	657.149	408.986	312.514	257.899
BACALADILLA	WHB	98.066	13.937	90.110	10.402	62.892	6.263	9.807	1.786	16.042	3.909
BOGA	BOG	88.240	4.412	7.647	449	38.603	1.564	22.772	2.931	5.654	336
BONITO	BON	48.530	11.103	69.305	27.509	56.976	8.426	50.314	21.959	64.867	30.508
BOQUERON	ANE	37.090	11.424	20.370	4.755	81.814	24.007	55.790	15.117	50.410	12.690
BRECA	PAC			35.873	12.641	63.463	23.572	152.373	35.686	152.035	44.596
BROTOLAS	FOX	32.850	10.544	7.435	2.774	2.633	623	4.996	2.191	2.235	1.213
BURRO	GBR					4.100	1.394				
CABALLAS	MAZ	707.790	43.190	301.429	20.433	317.142	18.717	59.556	7.881	156.228	17.908
CACHUCHO	DEL	14.670	4.575	15.384	4.944	4.843	466			460	9
CARAMEL-CHUCLAS	PIC					80	55				
CHERNA	WRF	5.692	3.307	2.182	1.017	1.562	483	13.559	2.873	20.228	4.906
CHUCHOS	SRX			23	7						
CONGRIO	COE	95.390	25.656	15.940	4.369	79.994	10.864	24.629	8.888	12.493	6.100
CORVINA	MGR			3.020	493	1.022	408	1.035	96	784	1.445
DENTONES-HURTA	DEX,REA	9.730	2.086	6.743	1.689			1.674	269	215	173
PARGO-BOCINEGRO	RPG	18.165	18.026	6.198	2.487	33.030	4.204	34.359	40.182	28.126	29.212
DORADA	SBG	560	162	5.602	3.963	6.294	1.379	765	986	1.174	1.615
ESCALOS DIVERSOS	SKH	725.920	182.876	409.572	130.350	1.897	96	115.290	67.865	35.007	16.850
FANECA	BIB	35.760	9.435	12.591	2.380	2.819	373	105	48	90	33
GALLINETA	BRF			75.936	8.366	67.843	17.234	71.086	29.527	38.615	20.071
HERRERA	SSB							420	240		
JAPUTA	POA	665.040	145.338	1.386.651	660.754	1.060.340	413.807	968.405	371.908	422.282	201.275
JURELES	JAX	1.261.495	175.812	535.381	65.052	508.852	82.636	388.539	98.829	244.231	69.419
LENGUADOS	SOX	32.085	28.401	2.429	1.849	25.947	9.684	940	876	4.445	2.454
LISTADO	SKJ	3.270	746	8.740	2.543	2.180	676	5.539	2.146	4.427	506
LUBINA	BSS	560	848	18.087	3.665	16.295	3.617	1.341	1.282	1.021	2.082
MARRAJO-TINTORERA	SMA,BSH			2.341.186	684.007	1.514.307	601.077	369.113	227.524	545.069	269.373
MELVA	BLT	76.830	6.573	1.127	1.005	5.561	2.918	12.339	3.972	7.805	1.044
MERLUZA	HKE	1.638.981	740.747	4.616.240	2.258.952	3.830.647	1.898.254	2.648.922	1.323.329	2.471.922	1.373.074
MERO	GPD	23.415	22.424	30.448	15.504	53.213	15.079	42.454	20.198	8.759	14.652
LISAS	MUL							644	206		
PALOMETA	POP							10.343	4.720	8.041	3.781
PECES MARINOS	MZZ	718.275	131.219	629.995	219.883	575.706	229.859	194.896	73.001	183.794	80.945
PEZ SABLE	SFS			626.120	60.751	984.718	88.694	1.360.554	126.293	1.561.527	324.459
PEZ DE SAN PEDRO-GAL	JOD,LEZ	24.510	10.781	9.599	4.254	1.334	764	115	29	12.414	7.162
PEZ ESPADA	SWO	300.895	194.745	687.584	471.655	550.966	452.989	240.180	192.706	315.470	274.879
RABIL	YFT										
RAPESES	MNZ	155.598	71.212	140.661	78.469	86.713	47.901	44.723	41.611	72.877	56.485
RASCACIOS	SCS	13.460	3.750	2.450	778					30	56
RAYAS	RAJ			21.326	4.879	7.055	1.932	13.245	5.216	9.248	3.776
RAYAS-MANTAS	BAI			115	22	3.035	358				
RODABALLOS	LEF	555	889	62.135	3.552	10.283	653	345	577	118	228
RUBIOS	GUX			16.292	8.992	8.247	4.640	774	296		
SALEMA	SLM					268	203	30	25	110	83
SALMONETES	MUX	23.400	12.336	12.648	6.570	17.511	5.893	6.100	5.804	14.390	12.617
SARDINA	PIL	416.735	42.951	99.788	9.603	140.972	19.044	203.706	28.239	147.480	16.774
SARGOS	SWA			50	37	1.654	573	915	626	1.044	586
<b>TOTAL PECES</b>		<b>8.131.316</b>	<b>2.309.240</b>	<b>13.031.908</b>	<b>5.191.840</b>	<b>10.863.271</b>	<b>4.458.535</b>	<b>8.336.679</b>	<b>3.737.043</b>	<b>7.142.010</b>	<b>3.463.576</b>
BIGARO	PEE							30	35		
CALAMARES	SQC	16.141	11.246	1.165	932	1.440	633	2.221	1.380	2.900	2.437
CHOCO	CTC			3.018	1.363	9.803	1.543	930	768	1.020	545
CHOPOS -CHOPITOS	CTL	18.760	8.554	740	309						
MOLUSCOS MARINOS	MOL	200	90	8.551	170						
POTAS	OMZ			77.586	8.010	215.791	32.743	83.521	21.823	133.871	28.195
PULPO	OCC	11.865	3.847	6.762	1.910	7.210	1.956	1.809	782	7.359	3.441
VLADORES	SQM	12.960	3.237			175	78				
<b>TOTAL MOLUSCOS</b>		<b>59.926</b>	<b>26.974</b>	<b>97.822</b>	<b>12.693</b>	<b>234.419</b>	<b>36.953</b>	<b>88.511</b>	<b>24.788</b>	<b>145.150</b>	<b>34.618</b>
BOGAVANTE	LBE									15	12
CAMARONES	PAL	1.250	895	403	136	5.146	1.416	5.299	1.884	1.575	671
CANGREJOS DE MAR	CRA			161	25	3.556	440	1.289	273	1.177	183
CARABINERO	SSH	65.820	89.015	93.687	124.368	115.978	173.340	77.342	198.723	60.048	183.961
CENTOLLA	SCR	120	46	7.952	9.917	3.559	3.525	790	205	15	26
CIGALA	NEP	23.690	32.885	59.674	80.102	69.753	85.650	65.378	147.307	37.136	81.060
CRUSTACEOS MARINOS	CRU	2.550	2.474								
GALERA	MTS					100	21	165	187	45	6
GAMBA	DPS	770.490	582.507	928.540	920.565	917.233	623.445	271.252	343.569	287.473	279.002
LANGOSTAS	CRW			920	3.036	336	350	106	201	3.625	7.215
LANGOSTINO	TGS			1.817	801						
<b>TOTAL CRUSTACEOS</b>		<b>863.920</b>	<b>707.822</b>	<b>1.093.154</b>	<b>1.138.950</b>	<b>1.115.661</b>	<b>888.188</b>	<b>421.621</b>	<b>692.350</b>	<b>391.109</b>	<b>552.137</b>
<b>TOTAL ALGECIRAS</b>		<b>9.055.162</b>	<b>3.044.035</b>	<b>14.222.884</b>	<b>6.343.482</b>	<b>12.213.351</b>	<b>5.383.675</b>	<b>8.846.810</b>	<b>4.454.180</b>	<b>7.678.268</b>	<b>4.050.331</b>

TABLA 1.5. PRINCIPALES ESPECIES SEGÚN PESO (MEDIAS QUINQUENALES PARA PESO Y VALOR)

ESPECIE	FAO	85-89			90-94			95-99		
		PESO MEDIO		VALOR MEDIO	PESO MEDIO		VALOR MEDIO	PESO MEDIO		VALOR MEDIO
		(Kg.)	(% s/ total)	(Miles Ptas.)	(Kg.)	(% s/ total)	(Miles Ptas.)	(Kg.)	(% s/ total)	(Miles Ptas.)
ATUN	BFT	1.551.598	6,98%	396.526	1.960.677	11,90%	754.499	408.920	3,93%	202.539
BACALADILLA	WHB	2.253.523	10,14%	235.492	1.146.706	6,96%	210.518	55.383	0,53%	7.259
CABALLAS	MAZ	926.284	4,17%	66.470	346.960	2,11%	50.887	308.429	2,96%	21.626
ESCUALOS DIVERSOS	SKH	1.426.302	6,42%	540.594	1.179.506	7,16%	511.494	257.537	2,48%	79.607
GAMBA	DPS	1.185.811	5,33%	973.621	809.441	4,91%	963.389	634.998	6,10%	549.818
JAPUTA	POA	2.461.272	11,07%	438.255	1.556.752	9,45%	379.723	900.544	8,66%	358.616
JURELES	JAX	1.141.858	5,14%	111.359	878.839	5,34%	163.476	587.700	5,65%	98.350
MERLUZA	HKE	4.223.476	19,00%	1.829.171	4.748.492	28,83%	1.903.173	3.041.342	29,23%	1.518.871
PECES MARINOS	MZZ	788.295	3,55%	150.345	718.494	4,36%	229.137	460.533	4,43%	146.982
PEZ ESPADA	SWO	1.841.600	8,28%	971.721	863.968	5,24%	595.843	419.019	4,03%	317.395
<b>TOTAL GENERAL</b>		<b>22.229.263</b>	<b>100,00%</b>	<b>6.980.744</b>	<b>16.472.842</b>	<b>100,00%</b>	<b>6.837.422</b>	<b>10.403.295</b>	<b>100,00%</b>	<b>4.655.141</b>

TABLA 1.6. PRINCIPALES ESPECIES SEGÚN VALOR (MEDIAS QUINQUENALES PARA PESO Y VALOR)

ESPECIE	FAO	85-89			90-94			95-99		
		PESO MEDIO	VALOR MEDIO		PESO MEDIO	VALOR MEDIO		PESO MEDIO	VALOR MEDIO	
			(Kg.)	(Miles Ptas.)		(% s/ total)	(Kg.)		(Miles Ptas.)	(% s/ total)
ATUN	BFT	1.551.598	396.526	5,68%	1.960.677	754.499	11,03%	408.920	202.539	4,35%
BACALADILLA	WHB	2.253.523	235.492	3,37%	1.146.706	210.518	3,08%	55.383	7.259	0,16%
ESCUALOS DIVERSOS	SKH	1.426.302	540.594	7,74%	1.179.506	511.494	7,48%	257.537	79.607	1,71%
GAMBA	DPS	1.185.811	973.621	13,95%	809.441	963.389	14,09%	634.998	549.818	11,81%
JAPUTA	POA	2.461.272	438.255	6,28%	1.556.752	379.723	5,55%	900.544	358.616	7,70%
JURELES	JAX	1.141.858	111.359	1,60%	878.839	163.476	2,39%	587.700	98.350	2,11%
MARRAJO-TINTORERA	SMA,BSH	56.257	6.813	0,10%	0	0	0,00%	953.935	356.396	7,66%
MERLUZA	HKE	4.223.476	1.829.171	26,20%	4.748.492	1.903.173	27,83%	3.041.342	1.518.871	32,63%
PECES MARINOS	MZZ	788.295	150.345	2,15%	718.494	229.137	3,35%	460.533	146.982	3,16%
PEZ ESPADA	SWO	1.841.600	971.721	13,92%	863.968	595.843	8,71%	419.019	317.395	6,82%
<b>TOTAL GENERAL</b>		<b>22.229.263</b>	<b>6.980.744</b>	<b>100,00%</b>	<b>16.472.842</b>	<b>6.837.422</b>	<b>100,00%</b>	<b>10.403.295</b>	<b>4.655.141</b>	<b>100,00%</b>



**TABLA 1.7. ESTRUCTURA DE LA FLOTA POR MODALIDADES (1989, 1999 Y VARIACIÓN)**

VARIABLES	ARRASTRE			CERCO			OTRAS MODALIDADES			TODAS LAS MODALIDADES		
	1989	1999	VARIAC. (%)	1989	1999	VARIAC. (%)	1989	1999	VARIAC. (%)	1989	1999	VARIAC. (%)
Nº DE BARCOS	29	104	258,62	51	20	-155,00	104	106	1,92	184	230	25,00
ARQUEO (TRB)	2.556	2.568	0,44	3.850	348	-1.004,78	2.568	2.249	-12,40	8.974	5.165	-42,44
POTENCIA (CV)	10.209	13.665	33,85	16.296	2.800	-482,00	13.665	12.338	-9,71	40.170	28.803	-28,30
TRIP. (Nº)	331	571	72,51	491	148	-231,76	571	569	-0,35	1.393	1.288	-7,54

**TABLA 1.8. INDICE DE PRECIOS PERCIBIDOS (IPP), SEGÚN MODALIDAD Y TOTAL**

AÑO	INDICE DE PRECIOS PERCIBIDOS				PRECIOS CONSTANTES (BASE 1992)			
	PECES	MOLUSCOS	CRUSTACEOS	TOTAL	PECES	MOLUSCOS	CRUSTACEOS	TOTAL
1985	81,36	35,55	29,80	71,50	295,33	105,25	495,39	300,91
1986	87,73	34,52	39,85	78,51	318,48	102,17	662,44	330,40
1987	79,37	61,67	74,73	78,39	288,13	182,55	1242,07	329,92
1988	92,19	63,91	72,20	88,30	334,66	189,18	1200,13	371,60
1989	92,09	78,46	67,04	87,36	334,28	232,24	1114,31	367,63
1990	111,35	66,12	78,70	105,00	404,19	195,73	1308,17	441,88
1991	107,93	77,15	85,40	103,55	391,78	228,37	1419,44	435,77
1992	100,00	100,00	100,00	100,00	363,01	296,01	1662,13	420,84
1993	98,81	124,44	68,86	93,44	358,70	368,34	1144,56	393,21
1994	94,20	116,23	47,88	85,76	341,94	344,05	795,84	360,93
1995	91,06	112,13	49,00	83,41	330,55	331,91	814,42	351,01
1996	112,78	98,60	61,00	103,10	409,41	291,85	1013,96	433,87
1997	115,41	93,16	45,02	102,22	418,93	275,75	748,37	430,19
1998	133,98	148,10	82,83	124,60	486,35	438,40	1376,69	524,35
1999	151,98	160,94	69,23	136,71	551,70	476,39	1150,70	575,34

