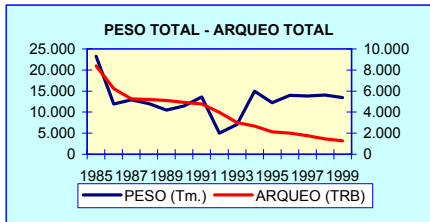
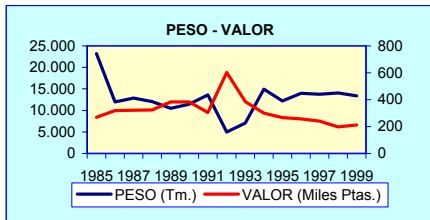


**PUERTO:EL PUERTO DE SANTA MARIA**

**TABLA 1.1. RESUMEN TOTAL ANUAL**

AÑO	PESO (Tm.)	VALOR (Miles Ptas.)	PRECIO MEDIO (Ptas.)
1985	23.220,33	6.268.030	270
1986	11.962,26	3.813.654	319
1987	12.898,41	4.152.110	322
1988	12.030,73	3.882.084	323
1989	10.477,57	4.019.364	384
1990	11.442,76	4.380.893	383
1991	13.633,16	4.155.057	305
1992	4.979,09	2.999.066	602
1993	7.046,60	2.720.851	386
1994	14.933,98	4.485.324	300
1995	12.224,95	3.254.732	266
1996	13.965,32	3.593.412	257
1997	13.798,25	3.327.638	241
1998	14.026,28	2.787.903	199
1999	13.429,08	2.847.029	212



**TABLA 1.2. RESUMEN POR CATEGORÍAS (PECES, MOLUSCOS, CRUSTACEOS)**

AÑO	PECES			MOLUSCOS			CRUSTACEOS		
	PESO (Tm.)	VALOR (Miles Ptas.)	PRECIO (Ptas./ Kg.)	PESO (Tm.)	VALOR (Miles Ptas.)	PRECIO (Ptas./ Kg.)	PESO (Tm.)	VALOR (Miles Ptas.)	PRECIO (Ptas./ Kg.)
1985	18.387,74	4.258.576	232	2.547,69	803.288	315	2.284,91	1.206.166	528
1986	9.188,46	2.481.754	270	1.951,50	731.500	375	822,30	600.400	730
1987	10.103,73	2.890.314	286	1.950,41	652.636	335	844,27	609.160	722
1988	8.875,98	2.409.784	271	2.224,87	783.359	352	929,88	688.941	741
1989	7.023,31	2.282.365	325	2.148,62	800.154	372	1.305,64	936.845	718
1990	8.854,93	2.950.194	333	1.899,11	764.335	402	688,72	666.364	968
1991	9.680,66	2.603.584	269	3.148,78	822.222	261	803,72	729.251	907
1992	3.573,77	2.088.187	584	1.131,63	635.698	562	273,69	275.181	1.005
1993	5.132,05	1.856.739	362	1.549,48	493.972	319	365,07	370.140	1.014
1994	10.452,43	2.821.989	270	3.466,57	834.224	241	1.014,98	829.111	817
1995	8.380,96	1.980.895	236	3.259,80	774.055	237	584,19	499.782	856
1996	10.880,97	2.406.971	221	2.272,98	487.423	214	811,37	699.018	862
1997	10.837,19	2.219.973	205	1.990,85	452.987	228	970,21	654.678	675
1998	10.619,90	1.809.033	170	2.153,06	406.613	189	1.253,23	572.257	457
1999	9.273,83	1.519.287	164	2.798,52	703.863	252	1.356,70	623.880	460

**TABLA 1.3. EVOLUCIÓN DE LA FLOTA OPERATIVA**

AÑO	DOTADAS CON MOTOR				NO DOTADAS CON MOTOR				TOTAL			
	BARCOS (Nº)	ARQUEO TRB	POTENCIA CV	TRIP	BARCOS (Nº)	ARQUEO TRB	POTENCIA CV	TRIP	BARCOS (Nº)	ARQUEO TRB	POTENCIA CV	TRIP
1985	110	8.396	26.575	1.277	2	3	0	3	112	8.399	26.575	1.280
1986	92	6.237	20.789	957	2	3	0	3	94	6.240	20.789	960
1987	75	5.263	18.837	776	2	3	0	3	77	5.266	18.837	779
1988	74	5.184	18.650	764	2	3	0	3	76	5.187	18.650	767
1989	73	5.097	18.438	747	2	3	0	3	75	5.100	18.438	750
1990	72	4.924	18.553	736	2	3	0	3	74	4.927	18.553	739
1991	70	4.780	18.238	700	2	3	0	3	72	4.783	18.238	703
1992	60	3.984	15.957	586	2	3	0	3	62	3.987	15.957	589
1993	52	3.015	13.262	469	2	3	0	3	54	3.018	13.262	472
1994	48	2.668	12.218	418	2	3	0	3	50	2.671	12.218	421
1995	43	2.111	10.883	350	2	3	0	3	45	2.114	10.883	353
1996	42	2.005	10.301	335	2	3	0	3	44	2.008	10.301	338
1997	39	1.756	9.019	296	2	3	0	3	41	1.759	9.019	299
1998	36	1.457	8.059	260	2	3	0	3	38	1.460	8.059	263
1999	35	1.269	7.654	241	2	3	0	3	37	1.272	7.654	244

**PUERTO: EL PUERTO DE SANTA MARIA**

**TABLA 1.4. DATOS POR ESPECIES. AÑOS 1985-1989**

ESPECIE	FAO	1985		1986		1987		1988		1989	
		PESO (Kg.)	VALOR (Miles Ptas.)	PESO (Kg.)	VALOR (Miles Ptas.)	PESO (Kg.)	VALOR (Miles Ptas.)	PESO (Kg.)	VALOR (Miles Ptas.)	PESO (Kg.)	VALOR (Miles Ptas.)
ACEDIA	CET	2.196.110	655.455	1.397.500	400.600	1.381.590	428.563	701.950	308.125	970.095	388.852
AGUJA	BEN	4.060	98			34.300	19.192	11.901	10.922	12.040	10.596
ALACHA	SAA	175	29	245	16	2.030	69	70	7	35	4
ANCHOVA	BLU	57.785	2.284	55.900	3.300	67.095	5.069	65.625	5.117	68.810	4.380
ANGUILA	ELE					105	20			140	6
ARAÑAS	WEX										
ATUN	BFT	10.255	1.841	7.900	3.200	33.740	16.918	12.320	6.377	19.180	10.191
BACALADILLA	WHB	88.165	6.050	52.400	4.300	85.295	7.081	99.820	9.957	118.265	8.718
BACORETA	LTA	1.645	138			455	66	1.715	219		
BAILA	SPU										
BESUGO BLANCO	SBA	298.970	44.628	151.600	21.400	332.325	70.143	355.950	82.402	380.345	85.797
BOGA	BOG	153.615	11.282	109.700	7.300	119.945	8.264	84.385	7.684	85.610	6.410
BONITO	BON	45.465	4.409	5.100	600	33.670	2.983	35.280	3.228	21.805	2.839
BOQUERON	ANE	5.367.005	1.031.912	364.300	87.900	338.835	107.586	334.670	106.358	257.705	89.482
BRECA	PAC	157.220	19.632	136.700	19.700	113.855	19.215	93.905	16.743	65.975	12.580
BROTOLAS	FOX	2.100	278	5.600	500	2.625	246	1.120	136	3.010	381
BURRO	GBR	8.680	1.133			20.545	2.156	10.850	1.577	15.085	2.321
CABALLAS	MAZ	846.475	57.508	483.400	33.100	1.413.300	92.878	2.030.735	157.888	303.555	34.080
CACHUCHO	DEL	60.305	12.308	11.800	3.100	3.675	829	16.905	4.998	19.075	5.148
CAZON	GAG										
CHERNA	WRF	10.010	1.107	35.900	3.600	52.080	5.304	52.780	8.795	30.870	5.324
CONGRIO	COE	61.495	8.730	30.600	4.900	20.300	3.425	24.045	2.821	16.835	2.091
CORVINA	MGR	77.875	18.627	48.500	12.100	29.085	7.819	23.500	9.170	34.615	10.756
DENTONES-HURTA	DEX.F	8.820	1.763	3.100	1.500	5.740	1.713	8.365	3.649	10.255	5.491
DORADA	SBG	25.025	3.995	7.800	1.100	7.875	1.796	1.295	388	2.625	1.707
ESCUALOS DIVERSOS	SKH	454.650	118.889	431.500	99.400	467.810	126.180	456.260	128.020	266.105	82.478
FALSO ABADEJO	GPX	65.275	4.529			770	311			280	29
FANECA	BIB	278.845	28.247	185.700	20.000	145.985	15.950	53.270	7.830	44.870	5.882
GALLINETA	BRF										
GALLOS	LEZ	51.555	14.097	34.100	10.000	26.320	7.905	73.615	5.300	10.955	4.899
HERRERA	SSB										
JAPUTA	POA	19.320	2.388	4.500	600	1.785	129	1.120	58	770	63
JURELES	JAX	529.970	46.849	276.500	26.700	293.405	25.441	345.695	32.687	282.135	29.081
LENGUADOS	SOX	2.014.215	1.031.471	1.750.000	776.100	1.599.080	785.850	1.083.495	586.068	1.117.095	606.010
LISAS	MUL	3.185	218	6.800	1.300	7.980	1.132	10.255	1.546	12.810	2.069
LISTADO	SKJ	4.865	511	4.200	500	105	20	6.090	415	3.780	459
LUBINA	BSS	4.340	1.433	5.000	1.500	2.765	665	2.380	512	2.730	1.232
MARRAJO-TINTORERA	SMA.BSH										
MELVA	BLT	9.940	839	700	100	560	48	1.960	154	315	271
MERLUZA	HKE	1.616.930	598.950	1.296.000	473.800	1.454.740	646.550	1.095.080	457.811	883.855	363.014
MERO	GPD	1.715	525	1.400	500	595	298	525	240	3.115	1.027
MORENA	MUI										
PALOMETA	POP										
PALOMETON	LEE	175	18			1.225	170	560	35	315	17
PAPARDA	SAU					5.915	1.243	2.275	160	1.505	148
PARGO-BOCINEGRO	RPG	19.215	4.666	69.500	17.000	110.530	31.012	98.455	34.371	145.040	52.615
PARGO-SAMA DE PLUMA	DEP							35	12	350	190
PATUDO	BET							70	19		
PECES MARINOS	MZZ	1.558.655	238.604	1.267.800	204.500	880.110	154.317	942.690	180.867	1.089.830	208.932
PEZ ESPADA	SWO	127.085	70.953	166.400	93.200	144.375	93.389	65.065	44.628	55.090	44.632
PEZ SABLE	SFS	210	56	315	38						
PINTARROJAS	SCL										
RABIL	YFT					140	97	35	3	70	9
RAPES	MNZ	248.080	66.860	143.500	45.700	115.640	40.780	140.840	51.385	164.220	60.443
RASCACIOS	SCS	7.350	1.443	19.300	2.200	25.830	3.566	19.985	2.722	39.830	6.947
RAYAS	RAJ										
RAYAS-MANTAS	BAI	230.930	26.610	146.400	18.600	155.855	20.000	121.485	14.847	139.475	17.679
RODABALLOS	LEF	11.340	5.722	4.200	2.100	6.405	4.074	8.015	4.273	2.940	1.357
RONCADOR	BGR										
SALMONETES	MUX	194.180	71.191	167.800	67.100	262.290	115.013	212.765	101.438	198.940	98.498
SARDINA	PIL	1.454.460	40.300	298.800	12.600	295.050	14.839	166.775	7.822	120.960	7.230
SARGOS	SWA										
SERRANO	BAS										
TAPACULOS	FLX										
ZORROS	THR										
<b>TOTAL PECES</b>		<b>18.387.740</b>	<b>4.258.576</b>	<b>9.188.460</b>	<b>2.481.754</b>	<b>10.103.730</b>	<b>2.890.314</b>	<b>8.875.981</b>	<b>2.409.784</b>	<b>7.023.310</b>	<b>2.282.365</b>
ALMEJA BABOSA	CTS					35	1			210	48
ALMEJA CHOCHA	TPS	2.835	143								
ALMEJA FINA	CTG	2.170	68	7.100	800	1.330	103	245	10	105	6
BERBERECHO	COC					105	77				
BIGARO	PEE	3.675	164			2.450	168	8.245	787	1.225	187
CALAMARES	SQC	292.880	167.783	340.200	195.600	342.650	214.098	378.490	241.144	341.355	191.156
CHIRLA	SVE	115.045	2.806	2.400	900	175	105	315	18	70	91
CHOCO	CTC										
CHOPOS-CHOPITOS	CTL	1.235.115	369.069	835.400	269.500	634.060	213.585	823.865	285.313	896.000	298.767
MEJILLON	MSX	59.220	1.351			105	3			35	2
MOLUSCOS MARINOS	MOL	42.280	6.873	52.100	5.300	10.850	2.744	10.990	1.971	10.465	2.590
NAVAJAS	SOI										
OSTION	OYG										
OSTRA	OYF										
POTAS	OMZ										
PULPO	OCC	783.825	252.962	714.300	259.400	935.305	217.803	905.170	237.460	833.595	293.404
PUNTILLITAS	SQQ										
VIEIRA	SCE	945	75			770	69	945	103	1.925	244
VOLADORES	SQM	9.695	1.994			22.575	3.880	96.600	16.553	63.630	13.659
<b>TOTAL MOLUSCOS</b>		<b>2.547.685</b>	<b>803.288</b>	<b>1.951.500</b>	<b>731.500</b>	<b>1.950.410</b>	<b>652.636</b>	<b>2.224.865</b>	<b>783.359</b>	<b>2.148.615</b>	<b>800.154</b>
BOGAVANTE	LBE	7.840	1.656			7.770	1.935	7.560	2.029	8.715	2.310
BUEY	CRE	1.890	183			980	151			140	6
CAMARONES	PAL	69.020	11.145	16.600	3.600	28.105	8.275	26.005	5.278	15.960	3.983

CANGREJOS DE MAR	CRA	5.635	414			18.620	2.896	21.350	2.364	20.230	3.313
CARABINERO	SSH	69.230	41.879	51.500	42.100	80.430	77.148	73.920	80.276	101.535	95.259
CENTOLLA	SCR	1.925	134			3.850	470	1.505	153	1.120	168
CIGALA	NEP	41.090	28.997	49.700	43.000	60.725	73.157	51.625	64.397	74.305	92.922
CRUSTACEOS MARINOS	CRU	148.610	10.052	128.900	11.600	229.880	17.401	172.588	16.593	215.635	21.049
GALERA	MTS										
GAMBA	DPS	1.882.545	1.078.439	519.900	458.900	336.385	369.095	472.045	426.655	770.280	627.830
GAMBA ROJA	ARA	1.855	278			735	563			175	20
LANGOSTAS	CRW	23.485	5.911	13.200	3.700	24.465	6.812	16.205	5.652	12.355	3.679
LANGOSTINO	TGS	31.290	27.060	42.500	37.500	51.135	50.980	85.890	85.458	84.875	86.259
NECORAS	SWM	490	18			980	106	1.190	86	280	36
PERCEBE	PCB					210	171			35	11
<b>TOTAL CRUSTACEOS</b>		<b>2.284.905</b>	<b>1.206.166</b>	<b>822.300</b>	<b>600.400</b>	<b>844.270</b>	<b>609.160</b>	<b>929.883</b>	<b>688.941</b>	<b>1.305.640</b>	<b>936.845</b>
<b>TOTAL PTO. STA. MARIA</b>		<b>23.220.330</b>	<b>6.268.030</b>	<b>11.962.260</b>	<b>3.813.654</b>	<b>12.898.410</b>	<b>4.152.110</b>	<b>12.030.729</b>	<b>3.882.084</b>	<b>10.477.565</b>	<b>4.019.364</b>

**PUERTO: EL PUERTO DE SANTA MARIA**

**TABLA 1.4. DATOS POR ESPECIES. AÑOS 1990-1994**

ESPECIE	FAO	1990		1991		1992		1993		1994	
		PESO (Kg.)	VALOR (Miles Ptas.)	PESO (Kg.)	VALOR (Miles Ptas.)	PESO (Kg.)	VALOR (Miles Ptas.)	PESO (Kg.)	VALOR (Miles Ptas.)	PESO (Kg.)	VALOR (Miles Ptas.)
ACEDIA	CET	1.377.175	525.096	1.727.140	459.319	1.000.940	376.654	1.172.048	350.715	1.902.520	496.594
AGUJA	BEN	32.655	22.638	21.405	12.444	30	53	590	378	5.730	3.841
ALACHA	SAA	70	17	1.050	170						
ANCHOVA	BLU	21.175	1.801	13.595	914	720	216	540	106	201.820	27.056
ANGUILA	ELE									7.410	4.595
ARAÑAS	WEX										
ATUN	BFT	38.675	14.322	73.380	22.717	60	48	13.620	6.755	82.300	32.106
BACALADILLA	WHB	64.890	6.109	69.235	5.449	89.622	46.202	47.155	11.723	32.110	2.149
BACORETA	LTA	1.645	118	1.260	301	30	3	30	5		
BAILA	SPU										
BESUGO BLANCO	SBA	333.830	77.432	454.645	90.791	36.570	7.600	138.940	23.325	422.170	72.487
BOGA	BOG	50.994	3.936	127.030	9.942	14.700	1.714	59.160	4.169	209.770	19.039
BONITO	BON	35.630	3.540	68.495	6.760			30	2	10.310	1.311
BOQUERON	ANE	430.206	92.476	551.716	115.660	38.530	1.947	56.650	15.792	311.800	69.138
BRECA	PAC	38.640	4.896	40.965	5.731	59.460	23.200	53.130	18.557	31.870	4.200
BROTOLAS	FOX	2.905	554	4.745	762	270	25	1.540	74	8.060	535
BURRO	GBR	11.690	1.612	7.575	999	30	14	1.390	119	1.400	171
CABALLAS	MAZ	665.770	71.070	684.935	92.716	47.700	12.723	32.565	4.194	308.520	44.643
CACHUCHO	DEL	13.265	3.884	15.675	3.899			8.130	1.286	10.060	1.643
CAZON	GAG										
CHERNA	WRF	20.860	3.724	22.440	3.245	1.630	258	4.260	478	22.830	3.676
CONGRIO	COE	16.660	1.690	12.810	1.336	2.330	805	3.740	742	12.650	1.314
CORVINA	MGR	49.910	15.319	37.605	14.317	3.170	911	14.335	4.332	64.370	16.465
DENTONES-HURTA	DEX,F	13.580	7.144	19.020	7.557	1.480	367	15.310	3.035	28.040	6.745
DORADA	SBG	8.015	2.670	38.155	9.030	1.920	570	8.790	2.921	8.680	2.227
ESCUALOS DIVERSOS	SKH	330.645	107.912	442.980	138.246	53.450	14.891	196.200	60.615	880.560	276.592
FALSO ABADEJO	GPX	140	15							690	146
FANECA	BIB	35.630	5.062	80.145	10.534	6.950	1.495	5.664	839	21.490	2.185
GALLINETA	BRF										
GALLOS	LEZ	23.135	8.901	45.110	13.989	18.690	5.082	30.375	9.009	69.060	19.105
HERRERA	SSB										
JAPUTA	POA	3.115	171	1.605	100	3.600	2.880	280	6	2.160	124
JURELES	JAX	283.010	29.343	291.440	34.355	92.670	25.685	254.100	46.771	684.840	57.089
LENGUADOS	SOX	853.505	459.324	899.435	412.244	403.105	327.914	733.810	332.103	1.458.960	620.811
LISAS	MUL	18.445	2.411	16.835	2.517	1.700	299	4.460	443	14.910	1.495
LISTADO	SKJ	1.260	625	2.450	389	19.230	5.760	1.620	482	30	4
LUBINA	BSS	1.610	620	12.765	4.538	1.260	415	1.070	263	6.150	1.394
MARRAJO-TINTORERA	SMA,BSH									1.930	633
MELVA	BLT	1.155	42	11.055	924	340	50			1.920	182
MERLUZA	HKE	770.973	317.971	1.381.129	548.040	766.298	886.179	813.460	484.024	1.195.890	449.335
MERO	GPD	1.505	531	1.425	552			120	111	2.610	1.026
MORENA	MUI										
PALOMETA	POP										
PALOMETON	LEE	805	129	2.895	343	100	15	2.590	309	2.450	300
PAPARDA	SAU	17.535	2.486	10.465	701			140	14	9.610	633
PARGO-BOCINEGRO	RPG	154.000	48.099	221.130	56.193	4.670	1.087	39.685	12.960	136.400	28.699
PARGO-SAMA DE PLUMA	DEP	35	31	7.970	1.136	280	44	4.990	780	1.470	225
PATUDO	BET			560	293	140	44	480	129	3.890	912
PECES MARINOS	MZZ	2.351.357	865.531	1.401.490	263.179	655.581	196.026	1.021.266	301.113	1.493.960	328.201
PEZ ESPADA	SWO	36.505	29.895	37.745	39.559	43.580	43.664	78.277	53.897	82.020	58.340
PEZ SABLE	SFS										
PINTARROJAS	SCL										
RABIL	YFT	175	102					140	136	90	8
RAPES	MNZ	158.165	58.847	127.435	51.438	57.800	37.231	59.210	31.054	208.380	71.204
RASCACIOS	SCS	17.150	2.655	25.005	3.274	7.630	2.279	6.590	951	18.660	2.459
RAYAS	RAJ										
RAYAS-MANTAS	BAI	121.555	17.759	97.565	14.268	16.210	4.177	21.830	3.180	100.470	12.748
RODABALLOS	LEF	2.765	1.582	9.680	2.951	2.100	488	200	48	1.910	606
RONCADOR	BGR							540	283		
SALMONETES	MUX	253.645	120.299	318.690	120.505	78.215	48.660	147.030	61.808	159.450	58.070
SARDINA	PIL	188.865	9.803	240.775	19.257	31.770	7.749	75.190	6.470	210.050	19.528
SARGOS	SWA										
SERRANO	BAS										
TAPACULOS	FLX					9.210	2.763	780	234		
ZORROS	THR										
<b>TOTAL PECES</b>		<b>8.854.925</b>	<b>2.950.194</b>	<b>9.680.655</b>	<b>2.603.584</b>	<b>3.573.771</b>	<b>2.088.187</b>	<b>5.132.050</b>	<b>1.856.739</b>	<b>10.452.430</b>	<b>2.821.989</b>
ALMEJA BABOSA	CTS	10.080	1.050	20.160	1.919			53.470	1.718		
ALMEJA CHOCHA	TPS									30	2
ALMEJA FINA	CTG	95.690	7.946	123.940	7.716	2.530	178	80.290	2.950	551.460	20.262
BERBERECHO	COC										
BIGARO	PEE	1.120	250	2.535	326	290	45	2.180	137	3.400	259
CALAMARES	SQC	370.930	160.419	1.166.095	310.296	264.095	287.504	336.475	152.317	647.480	197.111
CHIRLA	SVE	35	6	105	14					100	9
CHOCO	CTC										
CHOPOS-CHOPITOS	CTL	703.625	231.904	570.010	163.336	148.210	63.827	366.680	155.172	727.070	218.928
MEJILLON	MSX			210	14			4.670	247	48.630	2.359
MOLUSCOS MARINOS	MOL	36.820	144.313	10.050	2.476	18.530	5.243	10.068	1.848	17.410	5.797
NAVAJAS	SOI										
OSTION	OYG	35	8	35	10						
OSTRA	OYF					140	10				
POTAS	OMZ					18.630	5.589				
PULPO	OCC	652.880	213.541	1.206.435	325.995	671.550	271.042	686.460	178.691	1.417.400	378.568
PUNTILLITAS	SQQ					450	135	180	54		
VIEIRA	SCE	1.085	149	8.140	748			6.650	381	4.380	370
VOLADORES	SQM	26.810	4.749	41.065	9.372	7.205	2.125	2.360	458	49.210	10.559
<b>TOTAL MOLUSCOS</b>		<b>1.899.110</b>	<b>764.335</b>	<b>3.148.780</b>	<b>822.222</b>	<b>1.131.630</b>	<b>635.698</b>	<b>1.549.483</b>	<b>493.972</b>	<b>3.466.570</b>	<b>834.224</b>
BOGAVANTE	LBE	7.805	2.060	9.825	2.711	60	19	1.450	635	3.620	917
BUEY	CRE										
CAMARONES	PAL	8.330	2.169	10.445	2.047	10.315	8.606	1.190	601	3.430	801

CANGREJOS DE MAR	CRA	15.120	1.937	23.940	2.751	840	102	2.530	321	9.510	7.933
CARABINERO	SSH	71.050	72.862	76.530	86.578	18.500	20.100	19.270	34.867	58.460	60.394
CENTOLLA	SCR	1.575	224	1.430	150	160	8	280	25	610	194
CIGALA	NEP	72.894	91.788	67.289	95.462	33.306	63.723	19.960	42.822	36.770	64.289
CRUSTACEOS MARINOS	CRU	121.590	16.778	140.400	16.039	39.202	13.685	50.700	15.649	82.790	12.689
GALERA	MTS					4.920	3.936	5.910	4.728		
GAMBA	DPS	271.288	377.253	368.404	440.465	158.440	142.813	240.530	254.663	756.890	644.338
GAMBA ROJA	ARA										
LANGOSTAS	CRW	6.195	1.453	6.700	2.171	90	27	420	310	2.400	1.224
LANGOSTINO	TGS	112.315	99.791	96.910	80.734	7.860	22.163	19.075	15.073	51.720	35.622
NECORAS	SWM	560	49	975	87			3.310	378	8.780	710
PERCEBE	PCB			875	56			440	68		
<b>TOTAL CRUSTACEOS</b>		<b>688.722</b>	<b>666.364</b>	<b>803.723</b>	<b>729.251</b>	<b>273.693</b>	<b>275.181</b>	<b>365.065</b>	<b>370.140</b>	<b>1.014.980</b>	<b>829.111</b>
<b>TOTAL PTO. STA. MARIA</b>		<b>11.442.757</b>	<b>4.380.893</b>	<b>13.633.158</b>	<b>4.155.057</b>	<b>4.979.094</b>	<b>2.999.066</b>	<b>7.046.598</b>	<b>2.720.851</b>	<b>14.933.980</b>	<b>4.485.324</b>

**PUERTO: EL PUERTO DE SANTA MARIA**

**TABLA 1.4. DATOS POR ESPECIES. AÑOS 1995-1999**

ESPECIE	FAO	1995		1996		1997		1998		1999	
		PESO (Kg.)	VALOR (Miles Ptas.)	PESO (Kg.)	VALOR (Miles Ptas.)	PESO (Kg.)	VALOR (Miles Ptas.)	PESO (Kg.)	VALOR (Miles Ptas.)	PESO (Kg.)	VALOR (Miles Ptas.)
ACEDIA	CET	946.520	197.180	1.341.360	195.286	1.446.760	201.919	1.204.680	155.735	474.240	80.229
AGUJA	BEN	2.260	1.181	7.320	2.398			13.620	5.835	3.270	1.112
ALACHA	SAA									230	25
ANCHOVA	BLU	1.260	441	606.970	119.040	2.270	379	4.610	582	300	59
ANGUILA	ELE	30	1					140	16		
ARAÑAS	WEX									38.935	4.894
ATUN	BFT	164.170	73.603	231.490	79.069	73.420	25.699	82.670	32.575	48.230	15.619
BACALADILLA	WHB	73.890	5.284	40.060	2.360	60.590	2.267	41.810	3.690	126.085	11.028
BACORETA	LTA	30	3	1.580	264			350	834		
BAILA	SPU									90	24
BESUGO BLANCO	SBA	339.100	59.024	432.250	64.049	495.310	83.307	382.880	64.138	223.290	38.509
BOGA	BOG	223.310	18.364	322.510	26.368	360.000	33.626	291.380	27.062	1.889.215	239.868
BONITO	BON	12.830	1.003	21.130	2.926	17.480	2.240	9.870	1.007	5.180	1.098
BOQUERON	ANE	347.710	50.224	32.050	3.810	1.284.180	218.187	1.543.940	166.649	1.233.875	141.620
BRECA	PAC	14.460	1.376	20.260	2.317	24.090	2.951	10.760	1.503	48.751	12.772
BROTOLAS	FOX	3.490	238	1.410	136	7.890	690	3.030	250	9.330	558
BURRO	GBR	1.630	212	5.250	641	1.620	164	820	135	1.180	223
CABALLAS	MAZ	253.350	24.367	319.590	37.772	363.690	41.058	539.670	58.555	381.030	47.295
CACHUCHO	DEL	2.980	469	1.880	243	740	152	130	16	1.020	195
CAZON	GAG									3.240	1.206
CHERNA	WRF	14.910	2.439	10.560	1.200	20.600	2.321	36.700	4.919	76.140	10.550
CONGRIO	COE	5.230	702	4.980	422	4.960	472	2.270	193	2.170	254
CORVINA	MGR	23.950	5.846	32.510	3.987	62.020	7.979	57.530	8.631	18.915	3.757
DENTONES-HURTA	DEX	14.280	4.446	42.060	11.923	15.770	4.082	9.660	2.962	590	225
DORADA	SBG	77.440	13.777	57.190	12.837	29.580	10.960	28.910	12.751	3.780	993
ESCUALOS DIVERSOS	SKH	513.650	147.573	582.810	169.989	465.170	143.457	328.850	97.434	102.810	29.562
FALSO ABADEJO	GPX			1.010	67						
FANECA	BIB	16.630	2.040	26.280	2.668	40.210	3.985	5.980	599	10.135	1.266
GALLINETA	BRF									225	104
GALLOS	LEZ	73.540	15.424	122.320	23.151	54.730	14.438	38.730	10.369	8.562	2.893
HERRERA	SSB									324	54
JAPUTA	POA	1.010	101	30	1					2.420	364
JURELES	JAX	492.750	42.121	362.160	33.859	626.700	57.818	570.660	53.230	409.971	50.667
LENGUADOS	SOX	945.680	396.167	1.262.160	581.014	826.840	397.717	628.760	277.656	236.689	108.587
LISAS	MUL	9.050	568	5.210	512	7.810	727	6.700	697	9.175	654
LISTADO	SKJ			1.990	116	380	45	2.330	425	120	12
LUBINA	BSS	4.270	681	1.870	439	3.480	638	830	155	2.800	808
MARRAJO-TINTORERA	SMA	210	6							2.020	1.160
MELVA	BLT	8.660	437	9.120	411			1.390	173	1.430	117
MERLUZA	HKE	1.002.010	332.160	1.338.300	438.461	1.262.790	393.662	657.560	218.079	729.441	260.282
MERO	GPD	1.000	322	8.360	1.554	490	175	130	100	1.475	579
MORENA	MUI									780	122
PALOMETA	POP			30	2			170	7	520	76
PALOMETON	LEE	6.510	770	4.630	422			520	30	1.090	86
PAPARDA	SAU	500	50	30	8						
PARGO-BOCINEGRO	RPG	135.070	30.496	116.120	23.887	109.240	24.310	118.370	25.843	18.095	6.157
PARGO-SAMA DE PLUMA	DEP	1.680	320	390	66	160	24				
PATUDO	BET	420	99								
PECES MARINOS	MZZ	2.034.410	360.565	2.553.240	367.364	2.278.980	364.739	3.332.260	458.170	2.529.348	327.853
PEZ ESPADA	SWO	149.850	87.214	83.700	45.178	53.300	29.024	31.120	14.488	7.730	7.306
PEZ SABLE	SFS										
PINTARROJAS	SCL									2.920	467
RABIL	YFT	30	2								
RAPES	MNZ	108.280	36.983	185.080	51.357	98.570	32.864	56.430	18.101	32.630	14.490
RASCACIOS	SCS	9.260	1.197	30.430	3.525	38.960	4.274	29.880	3.526	17.426	2.276
RAYAS	RAJ									9.205	1.633
RAYAS-MANTAS	BAI	88.860	10.695	98.300	10.699	84.230	9.694	70.400	9.600	38.550	5.400
RODABALLOS	LEF	7.180	1.834	4.710	1.189	4.070	1.258	1.110	428	2.705	1.295
RONCADOR	BGR										
SALMONETES	MUX	146.290	43.736	225.410	50.489	357.220	78.926	258.430	50.657	143.912	50.029
SARDINA	PIL	101.330	9.154	324.870	33.495	252.890	23.745	213.950	21.228	344.035	26.982
SARGOS	SWA									3.915	1.422
SERRANO	BAS									9.078	1.565
TAPACULOS	FLX									3.445	1.411
ZORROS	THR									1.760	1.494
<b>TOTAL PECES</b>		<b>8.380.960</b>	<b>1.980.895</b>	<b>10.880.970</b>	<b>2.406.971</b>	<b>10.837.190</b>	<b>2.219.973</b>	<b>10.619.990</b>	<b>1.809.033</b>	<b>9.273.827</b>	<b>1.519.287</b>
ALMEJA BABOSA	CTS	380	51	3.740	188	100	9			450	631
ALMEJA CHOCHA	TPS										
ALMEJA FINA	CTG	696.110	22.845	241.050	12.262	84.120	5.307	283.300	17.256	291.765	21.897
BERBERECHO	COC	1.120	243	7.520	226			520	26		
BIGARO	PEE	2.670	144	2.890	228	3.100	194	4.300	183	1.520	225
CALAMARES	SQC	390.480	92.504	368.000	81.764	352.200	96.205	268.040	72.314	148.786	67.149
CHIRLA	SVE	520	71	3.380	169	8.260	331	14.530	1.152	8.270	890
CHOCO	CTC									65.956	34.373
CHOPOS-CHOPITOS	CTL	898.540	248.836	807.770	176.967	774.980	203.646	714.700	197.603	444.170	136.436
MEJILLON	MSX	115.580	4.719	82.750	3.360	46.870	2.925	7.790	482	1.250	68
MOLUSCOS MARINOS	MOL	40.770	11.562	117.540	12.999	139.130	10.332	190.930	14.643	131.280	13.291
NAVAJAS	SOI			280	17					62	44
OSTION	OYG									280	26
OSTRA	OYF							30	2		
POTAS	OMZ									19.805	5.276
PULPO	OCC	1.073.550	385.522	558.950	184.456	318.450	88.770	248.800	43.482	1.191.948	356.285
PUNTILLITAS	SQQ										
VIEIRA	SCE	15.630	1.782	2.380	296	130	18	510	53		
VOLADORES	SQM	24.450	5.776	76.730	14.491	263.510	45.250	419.610	59.417	493.010	67.272
<b>TOTAL MOLUSCOS</b>		<b>3.259.800</b>	<b>774.055</b>	<b>2.272.980</b>	<b>487.423</b>	<b>1.990.850</b>	<b>452.987</b>	<b>2.153.060</b>	<b>406.613</b>	<b>2.798.552</b>	<b>703.863</b>
BOGAVANTE	LBE	3.900	1.059	2.150	602	2.520	812	2.680	821	1.025	542
BUEY	CRE	100	9	240	20	5.530	472	4.640	985	75	37
CAMARONES	PAL	10.160	1.438	1.890	372	2.170	506	1.300	328	1.040	274

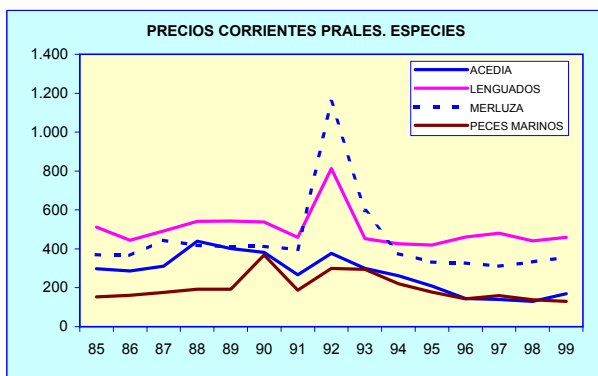
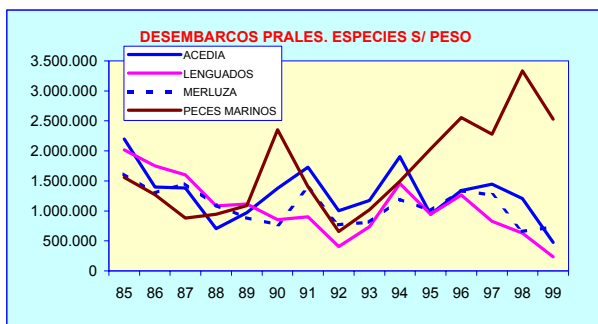
CANGREJOS DE MAR	CRA	2.950	248	22.130	4.287	26.210	6.543	7.370	1.136	4.230	3.062
CARABINERO	SSH	25.030	28.873	84.550	79.292	43.610	43.528	32.540	43.732	24.760	28.653
CENTOLLA	SCR	710	67	3.810	374	1.550	116	1.800	281	1.400	282
CIGALA	NEP	35.270	48.756	37.970	58.566	37.180	48.295	29.320	43.127	33.070	30.746
CRUSTACEOS MARINOS	CRU	39.370	6.203	36.430	7.016	122.880	25.397	174.440	30.141	68.195	12.208
GALERA	MTS									400	105
GAMBA	DPS	364.370	347.650	518.650	488.224	626.470	480.859	905.580	415.498	1.175.918	529.846
GAMBA ROJA	ARA							220	90		
LANGOSTAS	CRW	3.250	1.951	5.770	2.529	2.800	1.223	2.580	1.484	2.425	855
LANGOSTINO	TGS	85.970	62.608	91.720	57.245	81.330	45.455	70.920	33.509	26.715	16.572
NECORAS	SWM	13.110	920	6.060	491	17.960	1.472	19.840	1.125	17.445	700
PERCEBE	PCB										
<b>TOTAL CRUSTACEOS</b>		<b>584.190</b>	<b>499.782</b>	<b>811.370</b>	<b>699.018</b>	<b>970.210</b>	<b>654.678</b>	<b>1.253.230</b>	<b>572.257</b>	<b>1.356.698</b>	<b>623.880</b>
<b>TOTAL PTO. STA. MARIA</b>		<b>12.224.950</b>	<b>3.254.732</b>	<b>13.965.320</b>	<b>3.593.412</b>	<b>13.798.250</b>	<b>3.327.638</b>	<b>14.026.280</b>	<b>2.787.903</b>	<b>13.429.077</b>	<b>2.847.029</b>

TABLA 1.5. PRINCIPALES ESPECIES SEGÚN PESO (MEDIAS QUINQUENALES PARA PESO Y VALOR)

ESPECIE	FAO	85-89			90-94			95-99		
		PESO MEDIO		VALOR MEDIO	PESO MEDIO		VALOR MEDIO	PESO MEDIO		VALOR MEDIO
		(Kg.)	(% s/ total)	(Miles Ptas.)	(Kg.)	(% s/ total)	(Miles Ptas.)	(Kg.)	(% s/ total)	(Miles Ptas.)
ACEDIA	CET	1.329.449	9,42%	436.319	1.435.965	13,80%	441.676	1.082.712	8,03%	166.070
BOQUERON	ANE	1.332.503	9,44%	284.648	277.780	2,67%	59.003	888.351	6,59%	116.098
CABALLAS	MAX	1.015.493	7,19%	75.091	347.898	3,34%	45.069	371.466	2,75%	41.809
CALAMARES	SQC	339.115	2,40%	201.956	557.015	5,35%	221.529	305.501	2,26%	81.987
CHOPOS- CHOPITOS	CTL	884.888	6,27%	287.247	503.119	4,83%	166.633	728.032	5,40%	192.698
GAMBA	DPS	796.231	5,64%	592.184	359.110	3,45%	371.906	718.198	5,32%	452.415
LENGUADOS	SOX	1.512.777	10,72%	757.100	869.763	8,36%	430.479	780.026	5,78%	352.228
MERLUZA	HKE	1.269.321	8,99%	508.025	985.550	9,47%	537.110	998.020	7,40%	328.529
PECES MARINOS	MZZ	1.147.817	8,13%	197.444	1.384.731	13,31%	390.810	2.545.648	18,87%	375.738
PULPO	OCC	834.439	5,91%	252.206	926.945	8,91%	273.567	678.340	5,03%	211.703
<b>TOTAL GENERAL</b>		<b>14.117.859</b>	<b>100,00%</b>	<b>4.427.048</b>	<b>10.407.117</b>	<b>100,00%</b>	<b>3.748.238</b>	<b>13.488.775</b>	<b>100,00%</b>	<b>3.162.143</b>

TABLA 1.6. PRINCIPALES ESPECIES SEGÚN VALOR (MEDIAS QUINQUENALES PARA PESO Y VALOR)

ESPECIE	FAO	85-89			90-94			95-99		
		PESO MEDIO	VALOR MEDIO		PESO MEDIO	VALOR MEDIO		PESO MEDIO	VALOR MEDIO	
			(Kg.)	(Miles Ptas.)		(% s/ total)	(Kg.)		(Miles Ptas.)	(% s/ total)
ACEDIA	CET	1.329.449	436.319	9,86%	1.435.965	441.676	11,78%	1.082.712	166.070	5,25%
BOQUERON	ANE	1.332.503	284.648	6,43%	277.780	59.003	1,57%	888.351	116.098	3,67%
CALAMARES	SQC	339.115	201.956	4,56%	557.015	221.529	5,91%	305.501	81.987	2,59%
CHOPOS-CHOPITOS	CTL	884.888	287.247	6,49%	503.119	166.633	4,45%	728.032	192.698	6,09%
ESCUALOS DIVERSOS	SKH	415.265	110.993	2,51%	380.767	119.651	3,19%	398.658	117.603	3,72%
GAMBA	DPS	796.231	592.184	13,38%	359.110	371.906	9,92%	718.198	452.415	14,31%
LENGUADOS	SOX	1.512.777	757.100	17,10%	869.763	430.479	11,48%	780.026	352.228	11,14%
MERLUZA	HKE	1.269.321	508.025	11,48%	985.550	537.110	14,33%	998.020	328.529	10,39%
PECES MARINOS	MZZ	1.147.817	197.444	4,46%	1.384.731	390.810	10,43%	2.545.648	375.738	11,88%
PULPO	OCC	834.439	252.206	5,70%	926.945	273.567	7,30%	678.340	211.703	6,69%
<b>TOTAL GENERAL</b>		<b>14.117.859</b>	<b>4.427.048</b>	<b>100,00%</b>	<b>10.407.117</b>	<b>3.748.238</b>	<b>100,00%</b>	<b>13.488.775</b>	<b>3.162.143</b>	<b>100,00%</b>





**TABLA 1.7. ESTRUCTURA DE LA FLOTA POR MODALIDADES (1989, 1999 Y VARIACIÓN)**

VARIABLES	ARRASTRE			CERCO			OTRAS MODALIDADES			TODAS LAS MODALIDADES		
	1989	1999	VARIAC. (%)	1989	1999	VARIAC. (%)	1989	1999	VARIAC. (%)	1989	1999	VARIAC. (%)
Nº DE BARCOS	61	23	-62,30	1	1	0,00	13	13	0,00	75	37	-50,67
ARQUEO (TRB)	4.973	1.196	-75,95	90	39	-131,02	37	37	0,00	5.100	1.272	-75,06
POTENCIA (CV)	17.859	7.070	-60,41	190	195	2,56	389	389	0,00	18.438	7.654	-58,49
TRIP. (Nº)	630	181	-71,27	11	23	52,17	29	29	0,00	670	233	-65,22

**TABLA 1.8. INDICE DE PRECIOS PERCIBIDOS (IPP), SEGÚN MODALIDAD Y TOTAL**

AÑO	INDICE DE PRECIOS PERCIBIDOS				PRECIOS CONSTANTES (BASE 1992)			
	PECES	MOLUSCOS	CRUSTACEOS	TOTAL	PECES	MOLUSCOS	CRUSTACEOS	TOTAL
1985	55,33	66,17	50,38	59,33	323,31	371,70	506,57	357,35
1986	50,31	70,99	72,48	64,21	293,98	398,82	728,78	386,75
1987	55,71	59,92	90,58	64,56	325,52	336,63	910,74	388,88
1988	61,13	63,59	80,61	66,12	357,22	357,19	810,52	398,28
1989	62,25	69,83	74,71	68,20	363,71	392,29	751,20	410,81
1990	60,26	72,56	109,30	75,64	352,13	407,63	1098,97	455,60
1991	53,70	47,62	99,84	60,06	313,75	267,48	1003,85	361,74
1992	100,00	100,00	100,00	100,00	584,31	561,75	1005,44	602,33
1993	60,93	57,44	109,28	68,91	356,01	322,64	1098,70	415,09
1994	49,95	49,48	83,40	56,37	291,89	277,97	838,50	339,54
1995	47,60	55,77	85,56	58,88	278,11	313,28	860,25	354,65
1996	51,33	50,17	85,72	57,62	299,92	281,81	861,83	347,04
1997	53,37	47,76	73,14	54,71	311,83	268,28	735,33	329,55
1998	50,59	36,82	58,90	45,91	295,58	206,85	592,21	276,55
1999	54,47	58,54	51,05	55,66	318,28	328,85	513,27	335,27

