



PARQUE de las CIENCIAS  
ANDALUCÍA - GRANADA

**BORROWER:**

**ROYAL ONTARIO MUSEUM  
100 QUEEN'S PARK  
TORONTO, ONTARIO  
CANADA  
M5S 2C6**

**LENDER:**

**PARQUE DE LAS CIENCIAS  
AV. DE LA CIENCIA, S/N  
18006, GRANADA  
SPAIN**

## **LOAN AGREEMENT**

**LOAN MATERIAL**

A leopard with three impalas, as listed in the attached Appendix 'A', forms an integral part of this Agreement

---

### **LOAN CONDITIONS**

1. The Royal Ontario Museum will exercise the same care with respect to the loan as it does for the safekeeping of its own property.
2. Objects on loan shall remain in the condition in which they are received. They shall not be unframed, unglazed, or removed from mats, mounts, or bases, cleaned, fumigated, repaired or transported in damaged condition except:
  - a) With the written permission of the Parque de las Ciencias.
  - b) When such is imperative to prevent further damage.
3. The Muséum national d'histoire naturelle (MNHN), with which the Parque de las Ciencias has signed a collaboration agreement to include the scene in the "Félins" exhibition, will oversee and coordinate all aspects of scene handling and conservation.
4. Loans shall remain in the possession of the Royal Ontario Museum for the time specified below.
5. The Royal Ontario Museum will insure the loans under its fine arts policy, against all risks of physical loss or damage from any external cause while on its premises during the loan period. The policy referred to contains the usual exclusions of "all-risks" policies. Before shipment, the Royal Ontario Museum will provide the Parque de las Ciencias with a copy of this insurance policy, as well as the one covering the transport of the scene from Paris to Toronto. The value for insurance purposes is declared in section 7 of this agreement.
6. The Parque de las Ciencias authorizes the reproduction of loan material for documentary purposes, promotion or educational use, including web usage. Reproduction for any other use requires permission from the Parque de las Ciencias.

7. The Royal Ontario Museum accepts the value declared by the Parque de las Ciencias without prejudice to the determination of the fair market value of the loaned material if required for any purpose.

**Credit Line:** "On loan from the Parque de las Ciencias. Granada (España)"

**Lender's Value:** \$35,792.05 CAD (24,500.00€)

8. Pursuant to the Freedom of Information and Protection of Privacy Act (Ontario), may the Museum use the above credit line to identify the Parque de las Ciencias of this material in gallery/exhibition text, publications and/or promotional material from time to time?

YES  NO

In addition, the Royal Ontario Museum will mention the Parque de las Ciencias and Antonio Pérez in the credits of the exhibition as collaborators. A label on the scene itself should read: "***Scene from the Parque de las Ciencias de Granada (Spain) made by taxidermist and sculptor Antonio Pérez.***"

9. **Loan period:** from June 25, 2024 to November 3, 2024 (Approximately)

The Royal Ontario Museum and the Parque de las Ciencias agree to the conditions of the loan stated above and sign this loan agreement in Spanish and English on the date of the digital signature.

**ROYAL ONTARIO MUSEUM**

**CONSORCIO PARQUE DE LAS CIENCIAS**



Valerie Huaco  
Deputy Director, Collections & Research, and CIO

Luis Alcalá Martínez  
Managing Director

## CESIONARIO

**ROYAL ONTARIO MUSEUM  
100 QUEEN'S PARK  
TORONTO, ONTARIO  
CANADA  
M5S 2C6**

## CEDENTE

**PARQUE DE LAS CIENCIAS  
AV. DE LA CIENCIA, S/N  
18006, GRANADA  
SPAIN**

## PRÉSTAMO DE MATERIAL

Leopardo con tres impalas, según se detalla en el Apéndice A adjunto, el cual forma parte integral de este acuerdo

---

## CONDICIONES DE PRÉSTAMO

1. El Royal Ontario Museum custodiará el préstamo con el mismo cuidado que el que ejerce en sus bienes propios.
  2. Los objetos en préstamo deberán permanecer en la condición en que se reciben. No se podrán desmontar, retirar de la base o soportes, limpiar, fumigar, reparar o transportar en condiciones dañadas excepto en los siguientes casos:
    - a. Con el permiso por escrito del Parque de las Ciencias.
    - b. Cuando sea imperativo para evitar daños mayores.
  3. Todos los aspectos relacionados con la manipulación y conservación de la escena serán coordinados y supervisados por el Muséum national d'histoire naturelle (MNHN) con el que el Parque de las Ciencias tiene suscrito un acuerdo de colaboración para incorporar la escena a la exposición "Félins".
  4. El préstamo permanecerá en posesión del Royal Ontario Museum durante el periodo de tiempo detallado en este documento.
  5. El Royal Ontario Museum asegurará los objetos cedidos contra todos los riesgos de pérdida física o daño causado por cualquier causa externa durante el período del préstamo durante el periodo que se encuentren en sus instalaciones incluyéndolos en su póliza de obras de arte. La póliza a la que se hace referencia contiene las exclusiones habituales de las pólizas de "todo riesgo". El Royal Ontario Museum facilitará al Parque de las Ciencias con anterioridad al traslado una copia de la póliza de estancia, así como de la que cubra el transporte de la escena desde Paris hasta Toronto. El valor a efectos de seguro se detalla en el punto 7 del presente acuerdo.
  6. El Parque de las Ciencias autoriza la reproducción del material del préstamo con fines documentales o para promoción o uso educativo, incluido el uso en la web. La reproducción para cualquier otro uso requiere el permiso del Parque de las Ciencias.
  7. El Royal Ontario Museum acepta el valor declarado por el Parque de las Ciencias, sin perjuicio de la determinación del valor justo de mercado del material prestado, si fuera necesario para cualquier propósito.
- Valor del Préstamo: \$35,792.05 CAD (24,500.00€)

8. Crédito: “cedido por el Parque de las Ciencias. Granada (España)”

De conformidad con la Ley de Libertad de Información y Protección de la Privacidad (Ontario), el Museo puede utilizar el crédito descrito para identificar al Parque de las Ciencias de este material en textos de galerías/exposiciones, publicaciones y/o material promocional ocasionalmente:

SÍ  NO

No obstante, el Royal Ontario Museum incluirá al Parque de las Ciencias y a Antonio Pérez en los créditos de la exposición como colaboradores y la escena llevará una cartela con el texto: “*Escena del Parque de las Ciencias de Granada (España) realizada por el taxidermista-escultor Antonio Pérez*”.

9. Período de préstamo: desde el 25/6/2024 hasta el 3/11/24 (aproximadamente).

El Royal Ontario Museum y el Parque de las Ciencias acuerdan las condiciones del préstamo arriba indicadas y firman este acuerdo en español e inglés, en la fecha de la firma digital.

**ROYAL ONTARIO MUSEUM,**

**PARQUE DE LAS CIENCIAS,**



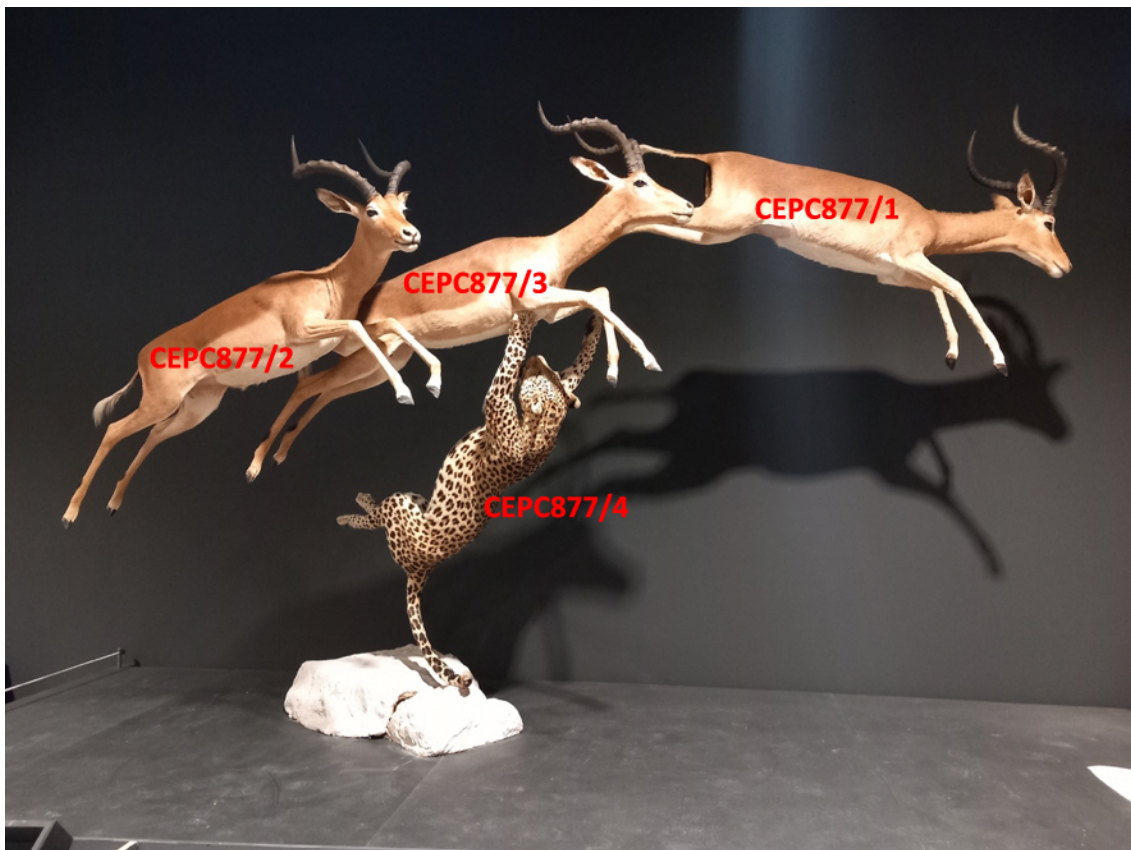
Valerie Huaco  
Deputy Director, Collections & Research, and CIO

Luis Alcalá Martínez  
Director Gerente

## APPENDIX “A”

### NATURALIZED SCENE LEOPARD HUNTING A GROUP OF THREE IMPALAS

#### INFORMATION



Owner: Parque de las Ciencias de Granada (Spain)

Inventory Number: CEPC877: 877/1, 877/2, 877/3, 877/4

Authorship: Taxidermist-sculptor Antonio Pérez. Taxidermia Mompíel, S.L.

Scene measures (meters): 5.00 (length) x 2.00 (width) x 2.50 (height)

Documentation and Provenance				
Scene	Species	Specimen	Documents	Provenance
Leopard with impalas [hunting]	<i>Panthera pardus</i>	1	CITES certificate: Nº ES-MA-00047/15C Permanent Loan document	<u>Leopard</u> : Zoo <u>Impalas</u> : Sport Hunting
	<i>Aepyceros melampus</i>	3		

## DESCRIPTION OF THE SCENE

The scene is made up of four independent animal sculptures that are assembled together. The animals are held together by a system of "scales" that balances their weights. The base piece (the leopard), is the one that acts as a counterweight and supports the weight of the impalas, which are joined by metal bolts. The entire assembly is very stable and the joining system is very easy to handle.

## INSURANCE

Wall-to-wall insurance policy at the borrower's expense.

## ECONOMIC VALUE FOR INSURANCE PURPOSES

VAT included

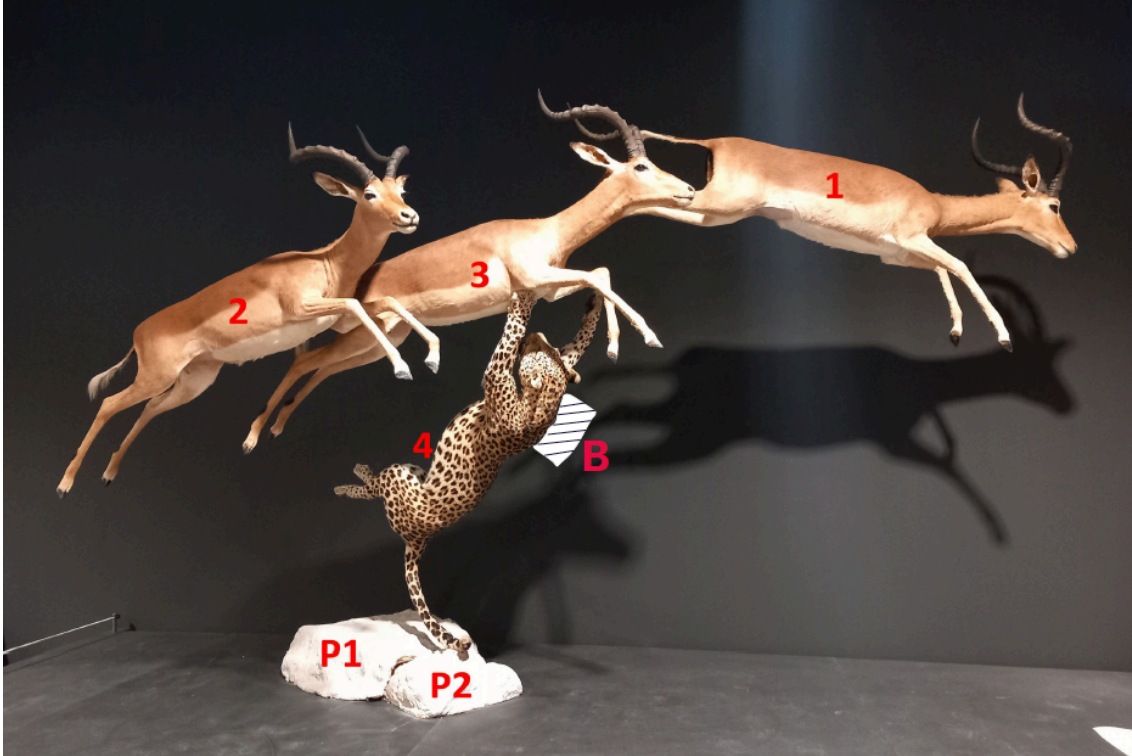
## CONSERVATION MEASURES OF THE PIECES

Scene	Species	Specimen	Owner	Value
Leopard with impalas [hunting]	<i>Panthera pardus</i> <i>Aepyceros</i> <i>melampus</i>	1 3	Consortio Parque Ciencias	24.500,00 €

- Temperature: 20º C ± 4º C
- Relative humidity: 55% ± 5%.
- Lighting: Do not expose to direct sunlight. As these are natural skins, it is recommended that light levels range between 50-150 lux, with a maximum ultraviolet light content of 75 µW/lm.
- Protect the scene from dust and pollutants.
- Monitor the risk of pests on the animals' skin. Any transfer from one site to another, requires the disinfection of the pieces by freezing or anoxia, after consultation and at the expense of the petitioner.
- Any deterioration of the pieces must be communicated to the curator of the Parque de las Ciencias, who will decide or approve the action to be taken.
- The pieces will be handled at all times by expert personnel.
- Visitors will be prevented from reaching the scene and touching the pieces. Security will also be guaranteed against acts of vandalism and destruction.
- The handling, packing, and transport will be carried out by a specialised company in transporting museum pieces, with proven safety and responsibility, to avoid damage due to negligent handling or accidents during transport. The instructions of the Parque de las Ciencias regarding the assembly/disassembly/packing of the scene are described below.
- Once the scene has been placed in the exhibition room, perform regularly a visual inspection of the installation and the scene exhibition conditions to identify any anomalies.

## SCENE DISASSEMBLY PROCEDURE

It is very important to follow the order described below.



- **IMPALAS**

Due to its higher position, begin by removing Impala 1 by lifting it upwards to disengage it from the bolt with a square anchor. Repeat this process for Impalas 2 and 3.

These animals are not fragile and can be held by any part during disassembly.

For easier identification during reassembly, it is recommended to number the Impalas 1 to 3.

During disassembly, place each impala individually on a blanket on the floor to prevent fur damage from rubbing. Position them with their horns facing upwards, so they rest on their legs and remain upright.

- **LEOPARD (4)**

After the impalas have been removed, open the leopard's base, which is made up of two pieces (P1, P2).

Then the counterweights, which are two concrete blocks, are removed. The leopard is placed lying on the floor on a blanket, with a 20 cm high polyurethane block wrapped with a blanket so that it does not rub against the hair, between the right shoulder and neck (B), to ensure that it does not rest on the ears or the hands.



When all the animals have been disassembled and protected in the blankets, they are wrapped or shrink-wrapped again with thermoplastic film and, finally, sealed with adhesive tape to prevent the packaging from opening. To make the pieces safer during transport, each package is wrapped in bubble wrap and stored in special custom-made wooden boxes.

See the attached video.

## ASSEMBLING THE SCENE

The assembly process is essentially the reverse of the disassembly process.

Once the animals have been unpacked, carefully place them on blankets on the floor in their designated positions.

Begin by placing the leopard (4), the base piece, on the designated spot. Next, position the counterweights on its metal base for support.

Then, the bolts of the impalas are fitted into the respective holes, starting with the lowest one (3), and continuing with the impala (2) and (1) in order. Finally, place the ornamental pedestal on the base of the leopard to cover the counterweights.

ALAMINOS  
ALAMINOS  
MARIA  
ESMERALDA -  
14627387P

Firmado digitalmente  
por ALAMINOS  
ALAMINOS MARIA  
ESMERALDA -  
14627387P  
Fecha: 2024.03.06  
19:06:17 +01'00'



Esmeralda Alaminos Alaminos  
Head of Patrimony Section